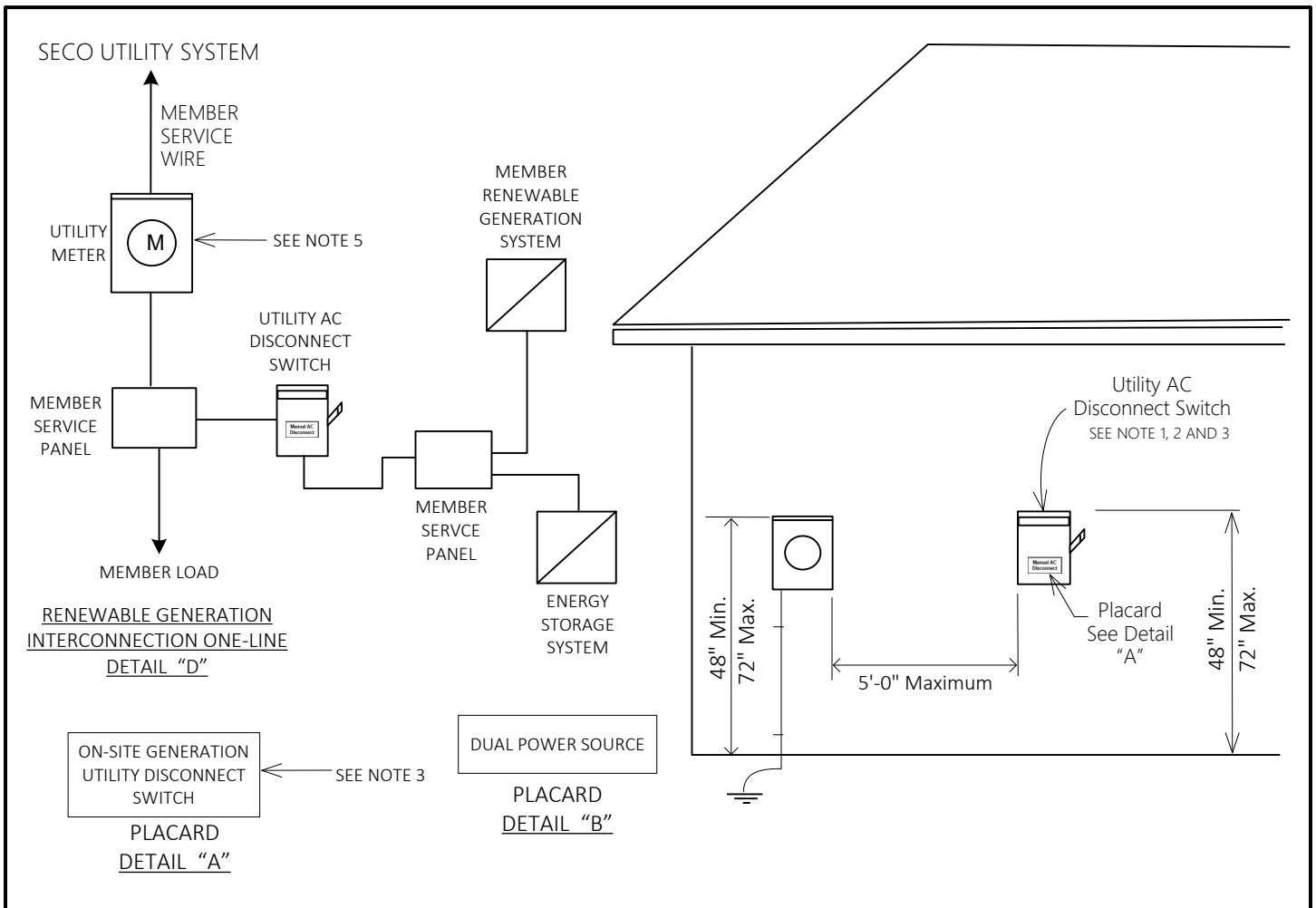


NOTES:

1. A MANUAL LOAD BREAK AC DISCONNECT SWITCH PROVIDING A LOCKABLE VISIBLE BREAK SEPARATION BETWEEN THE UTILITY POWER AND THE AC POWER OUTPUT OF THE RENEWABLE GENERATION SYSTEM (RGS) SHALL BE PROVIDED. A CIRCUIT BREAKER OR MOLDED CASE SWITCH DOES NOT PROVIDE AN ACCEPTABLE VISIBLE BREAK AND IS NOT ACCEPTABLE. THE UTILITY AC DISCONNECT SWITCH SHALL BE MOUNTED ADJACENT TO THE UTILITY METER ENCLOSURE WITHIN A 5'-0" MAXIMUM DISTANCE, WITHIN LINE OF SIGHT, AND SHALL BE ACCESSIBLE AT ALL TIMES TO SECO ENERGY.
2. THE FRONT COVER OF THE UTILITY AC DISCONNECT SWITCH SHALL CONTAIN A PLACARD IDENTIFYING THE ON-SITE POWER GENERATION SOURCE. SEE DETAIL "A".
3. THE PERMANENT AND DURABLE PLACARD SHALL BE NON-FERROUS METAL OR POLY-PLASTIC PLATES, UV RESISTANT, EPOXY GLUED OR RIVETED TO THE FRONT COVER OF THE DISCONNECT SWITCH WITH ENGRAVED OR STAMPED LETTERING A MINIMUM OF 1/4" HIGH, WHITE LETTERS ON A RED BACKGROUND. THE USE OF PEEL-AND-STICK LABELS, PAINT, OR MARKING PENS TO LABEL THE PLATES IS NOT ACCEPTABLE.
4. MEMBERS CONSIDERING INTERCONNECTION WITH NET METERING TO AN RGS INSTALLED AT THEIR SITE MUST COMPLETE THE APPLICATION, THE INTERCONNECTION AGREEMENT AND THE INTERCONNECTION CHECKLIST ON SECO ENERGY'S SOLAR DASHBOARD WHICH CAN BE FOUND AT WWW.SECOENERGY.COM.
5. ANY CONNECTIONS INSIDE THE METER ENCLOSURE IN ANY CONFIGURATION IS NOT ACCEPTABLE, NOR SHOULD IT BE USED AS A RACEWAY FOR OTHER CONDUCTORS. THE FRONT COVER OF THE ENCLOSURE SHALL HAVE A PERMANENT PLACARD INDICATING DUAL POWER SOURCE. SEE DETAIL "B". ALSO REFER TO NUMBER "3" FOR PLACARD REQUIREMENTS.



NOTES:

1. A MANUAL LOAD BREAK AC DISCONNECT SWITCH PROVIDING A LOCKABLE VISIBLE BREAK SEPARATION BETWEEN THE UTILITY POWER AND THE AC POWER OUTPUT OF THE RENEWABLE GENERATION SYSTEM (RGS) SHALL BE PROVIDED. A CIRCUIT BREAKER OR MOLDED CASE SWITCH DOES NOT PROVIDE AN ACCEPTABLE VISIBLE BREAK AND IS NOT ACCEPTABLE. THE UTILITY AC DISCONNECT SWITCH SHALL BE MOUNTED ADJACENT TO THE UTILITY METER ENCLOSURE WITHIN A 5'-0" MAXIMUM DISTANCE, WITHIN LINE OF SIGHT, AND SHALL BE ACCESSIBLE AT ALL TIMES TO SECO ENERGY.
2. THE FRONT COVER OF THE UTILITY AC DISCONNECT SWITCH SHALL CONTAIN A PLACARD IDENTIFYING THE ON-SITE POWER GENERATION SOURCE. SEE DETAIL "A".
3. THE PERMANENT AND DURABLE PLACARD SHALL BE NON-FERROUS METAL OR POLY-PLASTIC PLATES, UV RESISTANT, EPOXY GLUED OR RIVETED TO THE FRONT COVER OF THE DISCONNECT SWITCH WITH ENGRAVED OR STAMPED LETTERING A MINIMUM OF 1/4" HIGH, WHITE LETTERS ON A RED BACKGROUND. THE USE OF PEEL-AND-STICK LABELS, PAINT, OR MARKING PENS TO LABEL THE PLATES IS NOT ACCEPTABLE.
4. MEMBERS CONSIDERING INTERCONNECTION WITH NET METERING TO AN RGS INSTALLED AT THEIR SITE MUST COMPLETE THE APPLICATION, THE INTERCONNECTION AGREEMENT AND THE INTERCONNECTION CHECKLIST ON SECO ENERGY'S SOLAR DASHBOARD WHICH CAN BE FOUND AT WWW.SECOENERGY.COM.
5. ANY CONNECTIONS INSIDE THE METER ENCLOSURE IN ANY CONFIGURATION IS NOT ACCEPTABLE, NOR SHOULD IT BE USED AS A RACEWAY FOR OTHER CONDUCTORS. THE FRONT COVER OF THE ENCLOSURE SHALL HAVE A PERMANENT PLACARD INDICATING DUAL POWER SOURCE. SEE DETAIL "B". ALSO REFER TO NUMBER "3" FOR PLACARD REQUIREMENTS.



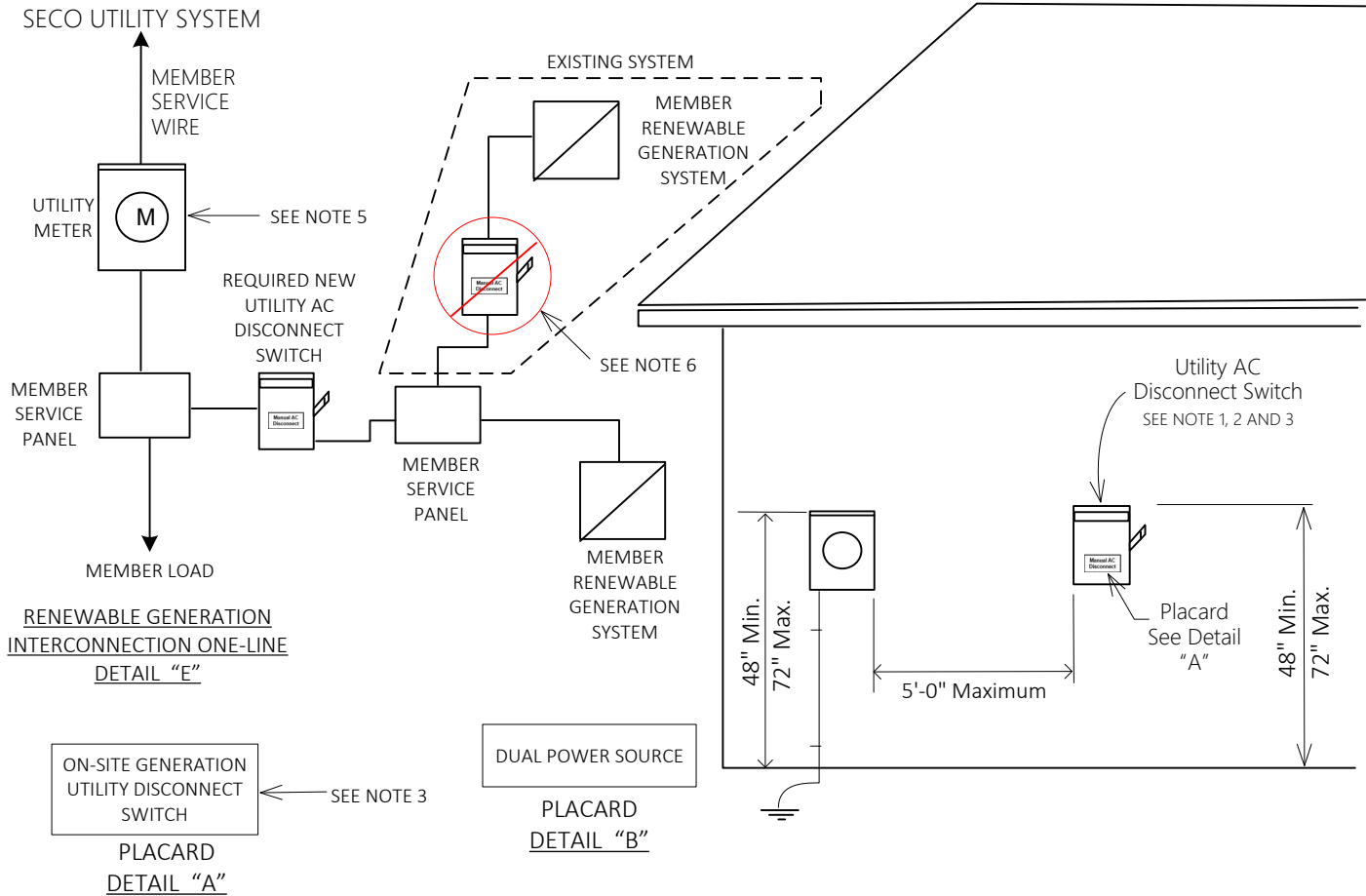
ENERGY STORAGE SYSTEM WITH RENEWABLE GENERATION SYSTEM UTILITY AC DISCONNECT REQUIREMENTS

REVISED:
JERRY JEAN-LOUIS

DATE:
8-01-2023

PAGE 2 OF 4

STANDARD ELECTRICAL SERVICE REQUIREMENTS



NOTES:

1. A MANUAL LOAD BREAK AC DISCONNECT SWITCH PROVIDING A LOCKABLE VISIBLE BREAK SEPARATION BETWEEN THE UTILITY POWER AND THE AC POWER OUTPUT OF THE RENEWABLE GENERATION SYSTEM (RGS) SHALL BE PROVIDED. A CIRCUIT BREAKER OR MOLDED CASE SWITCH DOES NOT PROVIDE AN ACCEPTABLE VISIBLE BREAK AND IS NOT ACCEPTABLE. THE UTILITY AC DISCONNECT SWITCH SHALL BE MOUNTED ADJACENT TO THE UTILITY METER ENCLOSURE WITHIN A 5'-0" MAXIMUM DISTANCE, WITHIN LINE OF SIGHT, AND SHALL BE ACCESSIBLE AT ALL TIMES TO SECO ENERGY.
2. THE FRONT COVER OF THE UTILITY AC DISCONNECT SWITCH SHALL CONTAIN A PLACARD IDENTIFYING THE ON-SITE POWER GENERATION SOURCE. SEE DETAIL "A".
3. THE PERMANENT AND DURABLE PLACARD SHALL BE NON-FERROUS METAL OR POLY-PLASTIC PLATES, UV RESISTANT, EPOXY GLUED OR RIVETED TO THE FRONT COVER OF THE DISCONNECT SWITCH WITH ENGRAVED OR STAMPED LETTERING A MINIMUM OF 1/4" HIGH, WHITE LETTERS ON A RED BACKGROUND. THE USE OF PEEL-AND-STICK LABELS, PAINT, OR MARKING PENS TO LABEL THE PLATES IS NOT ACCEPTABLE.
4. MEMBERS CONSIDERING INTERCONNECTION WITH NET METERING TO AN RGS INSTALLED AT THEIR SITE MUST COMPLETE THE APPLICATION, THE INTERCONNECTION AGREEMENT AND THE INTERCONNECTION CHECKLIST ON SECO ENERGY'S SOLAR DASHBOARD WHICH CAN BE FOUND AT WWW.SECOENERGY.COM.
5. ANY CONNECTIONS INSIDE THE METER ENCLOSURE IN ANY CONFIGURATION IS NOT ACCEPTABLE, NOR SHOULD IT BE USED AS A RACEWAY FOR OTHER CONDUCTORS. THE FRONT COVER OF THE ENCLOSURE SHALL HAVE A PERMANENT PLACARD INDICATING DUAL POWER SOURCE. SEE DETAIL "B". ALSO REFER TO NUMBER "3" FOR PLACARD REQUIREMENTS.
6. SECO REQUIRES A SINGLE MANUAL AC DISCONNECT TO ISOLATE THE ENTIRE RENEWABLE GENERATION SYSTEM. THE EXISTING MANUAL AC DISCONNECT SHALL BE REMOVED AND A NEW UTILITY AC DISCONNECT MUST BE INSTALLED AS DEPICTED IN DETAIL "E".



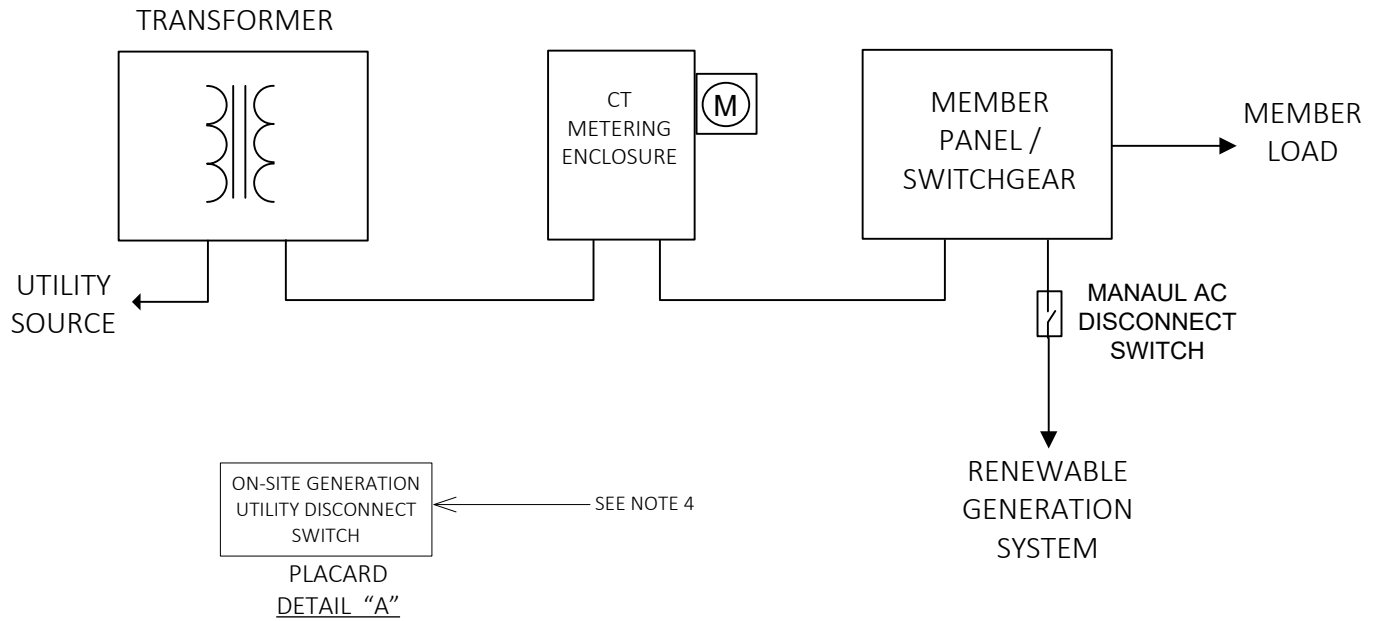
NEW RENEWABLE GENERATION SYSTEM RETROFITTING TO EXISTING RENEWABLE GENERATION SYSTEM UTILITY AC DISCONNECT REQUIREMENTS

REVISED:
JERRY JEAN-LOUIS

DATE:
8-01-2023

PAGE 3 OF 4

STANDARD ELECTRICAL
SERVICE REQUIREMENTS



NOTES:

1. THE RENEWABLE GENERATION SYSTEM (RGS) MUST BE PROTECTED BY A BREAKER OR FUSIBLE DISCONNECT - PER NEC 705.30 – 705.31.
2. A MANUAL LOAD BREAK AC DISCONNECT SWITCH PROVIDING A LOCKABLE VISIBLE BREAK SEPARATION BETWEEN THE UTILITY POWER AND THE AC POWER OUTPUT OF THE RGS SHALL BE PROVIDED. A CIRCUIT BEAKER OR MOLDED CASE SWITCH DOES NOT PROVIDE AN ACCEPTABLE VISIBLE BREAK AND IS NOT ACCEPTABLE. THE UTILITY AC DISCONNECT SWITCH SHALL BE ACCESSIBLE AT ALL TIMES TO SECO ENERGY.
3. THE FRONT COVER OF THE UTILITY AC DISCONNECT SWITCH SHALL CONTAIN A PLACARD IDENTIFYING THE ON-SITE POWER GENERATION SOURCE. SEE DETAIL "A".
4. THE PERMANENT AND DURABLE PLACARD SHALL BE NON-FERROUS METAL OR POLY-PLASTIC PLATES, UV RESISTANT, EPOXY GLUED OR RIVETED TO THE FRONT COVER OF THE DISCONNECT SWITCH WITH ENGRAVED OR STAMPED LETTERING A MINIMUM OF 1/4" HIGH, WHITE LETTERS ON A RED BACKGROUND. THE USE OF PEEL-AND-STICK LABELS, PAINT, OR MARKING PENS TO LABEL THE PLATES IS NOT ACCEPTABLE.
5. THE RGS SHALL BE CERTIFIED AS UL 1741 AND IEEE 1547 COMPLIANT.
6. THE RGS POINT OF INTERCONNECTION CANNOT BE AT ANY SECO ENERGY EQUIPMENT INCLUDING: METERING ENCLOSURES, CT METERING CABINETS, SWITCHING CABINETS, TRANSFORMERS, AND TRANSFORMER SECONDARY CABINETS. THE POINT OF INTERCONNECTION MUST BE MADE WITHIN CUSTOMER WIRING AND EQUIPMENT.
7. SECO ENERGY EQUIPMENT SHALL NOT BE USED AS A RACEWAY FOR OTHER CONDUCTORS.
8. THE RGS MUST BE IN COMPLIANCE WITH NEC ARTICLE 690 AND MEET THE REQUIREMENTS OF THE AUTHORITY HAVING JURISDICTION.
9. MEMBERS CONSIDERING INTERCONNECTION WITH NET METERING TO AN RGS INSTALLED AT THEIR SITE MUST COMPLETE THE APPLICATION, THE INTERCONNECTION AGREEMENT AND THE INTERCONNECTION CHECKLIST ON SECO ENERGY'S SOLAR DASHBOARD WHICH CAN BE FOUND AT WWW.SECOENERGY.COM.



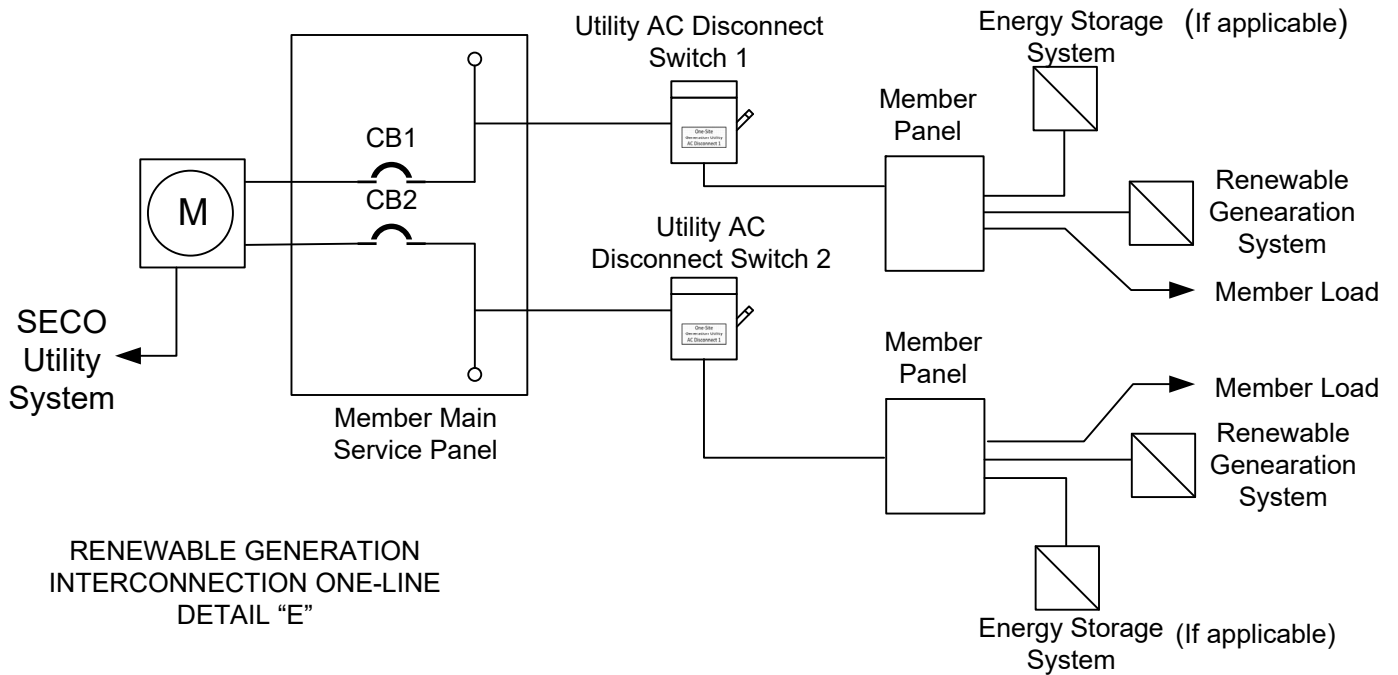
RENEWABLE GENERATION SYSTEM THREE-PHASE (IT-RATED SERVICES) COMMERCIAL / INDUSTRIAL REQUIREMENTS

REVISED:
JERRY JEAN-LOUIS

DATE:
8-01-2023

PAGE 4 OF 4

STANDARD ELECTRICAL
SERVICE REQUIREMENTS



NOTES:

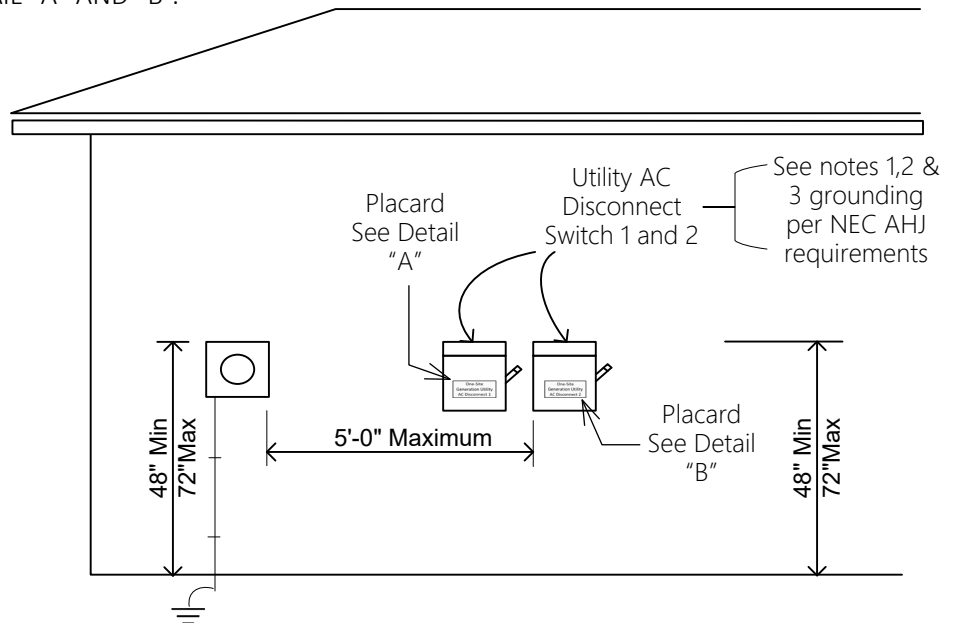
1. A MANUAL LOAD BREAK AC DISCONNECT SWITCH PROVIDING A LOCKABLE VISIBLE BREAK SEPARATION BETWEEN THE UTILITY POWER AND THE AC POWER OUTPUT OF THE RENEWABLE GENERATION SYSTEM (RGS) SHALL BE PROVIDED FOR EACH SIDE OF THE 400 AMP SPLIT SERVICE AS DEPICTED IN DETAIL "E". A CIRCUIT BREAKER OR MOLDED CASE SWITCH DOES NOT PROVIDE AN ACCEPTABLE VISIBLE BREAK AND IS NOT ACCEPTABLE. BOTH UTILITY AC DISCONNECT SWITCHES SHALL BE MOUNTED ADJACENT TO EACH OTHER AND TO THE UTILITY METER ENCLOSURE WITHIN A 5'-0" MAXIMUM DISTANCE, WITHIN LINE OF SIGHT, AND SHALL MEET THE ACCESSIBILITY REQUIREMENTS SPECIFIED IN THE INTERCONNECTION AGREEMENT FOR MEMBER-OWNED RENEWABLE GENERATION SYSTEMS. EACH AC DISCONNECT MUST ISOLATE BOTH THE RGS AND THE ENERGY STORAGE SYSTEMS IF APPLICABLE.
2. THE FRONT COVER OF THE UTILITY AC DISCONNECT SWITCHES SHALL CONTAIN A PLACARD IDENTIFYING THE ON-SITE POWER GENERATION SOURCE. SEE DETAIL "A" AND "B".

ON-SITE GENERATION
UTILITY AC
DISCONNECT 1

PLACARD
DETAIL "A"

ON-SITE GENERATION
UTILITY AC
DISCONNECT 2

PLACARD
DETAIL "B"



400 AMP SPLIT BREAKER SERVICES WITH RENEWABLE GENERATION SYSTEMS UTILITY AC DISCONNECT REQUIREMENTS

REVISED:
Jerry Jean-Louis

DATE:
2/26/2025

PAGE 1 OF 2

STANDARD ELECTRICAL
SERVICE REQUIREMENTS

NOTES:

3. THE PERMANENT AND DURABLE PLACARD SHALL BE NON-FERROUS METAL OR POLY-PLASTIC PLATES, UV RESISTANT, EPOXY GLUED OR RIVETED TO THE FRONT COVER OF THE DISCONNECT SWITCH WITH ENGRAVED OR STAMPED LETTERING A MINIMUM OF 1/4" HIGH, WHITE LETTERS ON A RED BACKGROUND. THE USE OF PEEL-AND-STICK LABELS, PAINT, OR MARKING PENS TO LABEL THE PLATES IS NOT ACCEPTABLE.
4. MEMBERS CONSIDERING INTERCONNECTION WITH NET METERING TO AN RGS INSTALLED AT THEIR SITE MUST COMPLETE THE APPLICATION, THE INTERCONNECTION AGREEMENT AND THE INTERCONNECTION CHECKLIST ON SECO'S SOLAR DASHBOARD THAT CAN BE FOUND AT WWW.SECOENERGY.COM.
5. ANY CONNECTIONS INSIDE THE METER ENCLOSURE IN ANY CONFIGURATION IS NOT ACCEPTABLE, NOR SHOULD IT BE USED AS A RACEWAY FOR OTHER CONDUCTORS. THE FRONT COVER OF THE ENCLOSURE SHALL HAVE TWO PERMANENT PLACARDS: ONE INDICATING DUAL POWER SOURCE (SEE DETAIL "C") AND THE OTHER PROVIDING INSTRUCTIONS ON HOW TO ISOLATE THE RGS FROM THE UTILITY GRID (SEE DETAIL "D"). ALSO REFER TO NOTE 3 FOR PLACARD REQUIREMENTS.
6. THIS STANDARD ONLY APPLIES TO MAIN PANEL SPLIT BREAKER SERVICES.

ON-SITE GENERATION UTILITY AC
DISCONNECT 1 AND 2 MUST BE OPENED
TO ISOLATE THE SOLAR SYSTEMS

PLACARD
DETAIL "D"

DUAL POWER SOURCE

PLACARD
DETAIL "C"



400 AMP SPLIT BREAKER SERVICES WITH RENEWABLE GENERATION
SYSTEMS UTILITY AC DISCONNECT REQUIREMENTS

REVISED:
Jerry Jean-Louis

DATE:
2/26/2025

PAGE 2 OF 2

STANDARD ELECTRICAL
SERVICE REQUIREMENTS