

Fixture



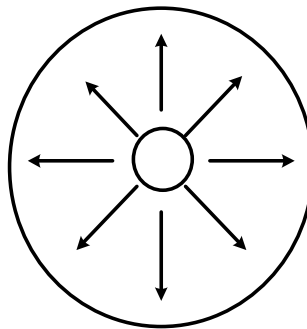
Contact Customer Service

Type:	Yard
Color	Natural aluminum
Watts (see note 4)	100 W
Lighting Pattern (see note 3)	5
Mo. Rental Single	see note 3
Use with Pole:	6

Notes:

1. Lumen ratings: 100 Watts = 9,500 Lumens
2. If primary line extensions are required, there will be additional charges.
3. Contact Customer Service or your local SECO office for rental fees and installation costs.
4. Lighting Pattern:

TYPE 5





Contact Engineering Department

	A	B	C	D	E	F	G	H
Type:	Savannah	Canterbury	Colonial	Acorn	Marquis	Shoebox	Cobra Head	Ultraflood
CU	PT100S	PT100K	PT100C	PT100A	250WSTLTKD	WSTLTORNSB (Black)	WSTLTS	WULS
Color	Black	Green	Black	Black	Black	Black only	Light Grey	Bronze
Watts (see note 1)	100 W	100 W	100 W	100 W	250 W	250 W, 400 W	100W, 250W, & 400W	250 W, 400 W
Lighting Pattern (see note 4)	5	5	5	5	3	2	3	Directional
Mo. Rental Single	see note 3	see note 3	see note 3	see note 3	see note 3	see note 3	see note 3	see note 3
Mo. Rental Double	see note 3	see note 3	see note 3	see note 3	see note 3	see note 3	see note 3	see note 3
Use with Pole:	1	2	3 & 4	3 & 4	4	4	5 & 6	5 & 6

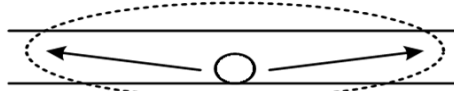


	1	2	3	4	5	6
Type:	Savannah	King	Fluted Concrete	Smooth Concrete	Square Concrete	Wood
CU	12ALS	17KL	15FCL	__CL __CLTR	30-CL 30CLTS(Tenon top for A,C,D, E & F)	__Class
Material	Aluminum	Aluminum	Concrete	Concrete	Concrete	Wood
Color	Black	Green	Black	Black	Natural	Green tint
Mounted Height	12'	15'	12'	12', 15', 20', 25', 29'	20', 25', 29', 30'	25', 29', 34'
Mo. Rental	see note 3	see note 3	see note 3	see note 3	see note 3	see note 3

Notes:

- Lumen ratings: 100 Watts = 9,500 Lumens, 250 Watts = 27,500 Lumens, and 400 Watts = 50,000 Lumens.
- The pole costs includes the secondary cable and conduit from the power source to the fixture on the top of the pole. If primary line extensions are required, there will be additional charges.
- Contact Customer Service or your local SECO office for rental fees and installation costs.
- Lighting Pattern:

TYPE 2



TYPE 3



TYPE 5

