



## Vegetation Management Cycle Maintenance and Line Clearance Specifications

Measuring 10 ft. from each side of the pole/outside conductor, if the base of the tree is "Inside" 10 ft.:

- All brush (woody stem plant species of less than four inches (4") in diameter at breast height ("DBH") and a maximum of 6 ft. in overall height, including vines) will be reviewed/planned for mowing, spraying, and/or to be hand-cut by subcontractor mowing personnel wherever possible for reliability.
- Herbicide will be applied within 30 days of areas being mowed.
- Areas deemed appropriate for backpack foliar herbicide application will be sprayed instead of mowed.
- All 4-10" DBH vegetation will be removed.
- All dying, decaying, or hazard trees with the potential to impact the line, regardless of size, will be removed.
- For all trees greater than 10" DBH, if it can be directionally pruned to provide 10 ft. clearance from conductor, it should be trimmed. If not, it should be removed.

Measuring 10 ft. from each side of the pole/outside conductor, if the base of the tree is "Outside" 10 ft.:

- Trim encroaching vegetation only, unless absolutely necessary to remove.

- All removals greater than 10" DBH outside 10 ft. require approval from SECO management.

#### Measuring 10 ft. above the pole:

- Any limb, branch, or tree growth within 0 to 10 ft. above the pole will be trimmed (regardless of established wood).
- Anything over 10 ft. above the pole (including established wood) will not be trimmed or removed unless dying, decaying or hazard.

#### Service Trims, Overhead Guy Poles, and Uplift Poles:

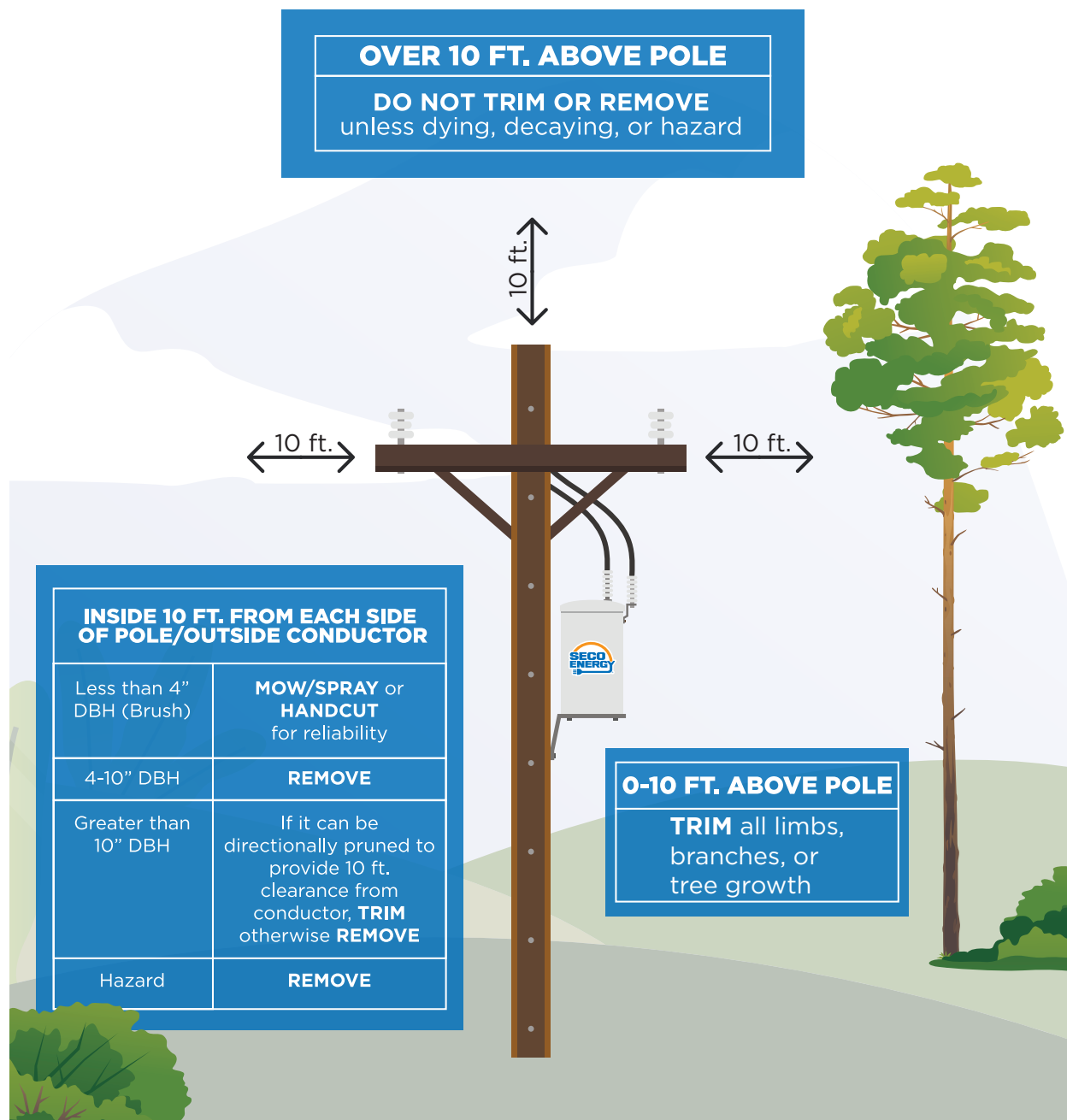
- Service trims will only be planned on services that have been pushed out of sag and will be trimmed to 4 ft. clearance. Removals on service trims require approval from SECO management. Overhead guy poles and down guys will be treated like service trims.
- Overhead guy poles and uplift poles marked for pole replacement with a 1" x 1" square metal tag attached need a minimum of 10 ft. clearance around the sides and top of the pole.

#### Utility Pruning Standards:

SECO's goal is to achieve a 3-year maintenance trimming cycle, addressing 1,500 overhead line miles per year.

While SECO strives to meet the American National Standard for Tree Care Operations ("ANSI A300"), if SECO determines a tree can be trimmed and not removed without posing any safety or reliability concerns, SECO may do so, even though more than the maximum 25% tree canopy may be removed.

Laterals or electrical facilities that are de-energized or do not have any active accounts will NOT be planned for mowing, tree trimming, or tree removal.



SECO Energy is an equal opportunity employer and provider.